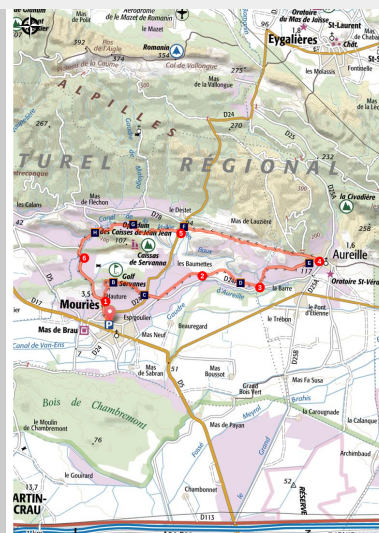


At the heart of an olive grove

Mouriès



Oratoire (Marianne Dispa - PNR Alpilles)



A circuit which follows the old railway track Salon-Arles and allows you to see landscapes of agricultural Provence. So delightful!

Along the south side of the Alpilles between the villages of Mouriès and Aureille, this walk goes from the west to east side of a land shaped by man around olive crops, vines and fruit trees. Between pine forest and scrubland, from the massif to the piedmont plain, the landscapes are rich and variant.

Useful information

Practice : WALKING

Duration : 6 h

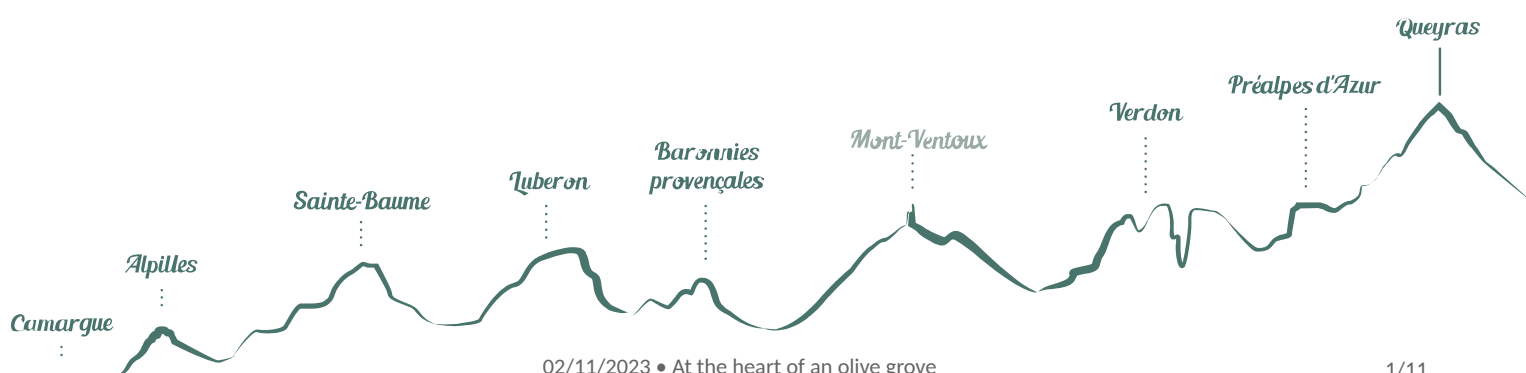
Length : 18.9 km

Trek ascent : 303 m

Difficulty : Medium

Type : Boucle

Themes : A lookout, a viewpoint,
Heritage and history, Waters and rivers



Trek

Departure : Parking at the Place de l'Europe, Mouriès

Arrival : Parking at the Place de l'Europe, Mouriès

Markings :  PR  GR®

From the car park at the Place de l'Europe, go left following the Avenue des Alpilles. 100m further, take the Route de Servanes. Continue on it for 600m.

1 - In the left turn, go right up the path leading to the scrub. At the top, turn right and go through the Castellans ridgeline. At the bottom, cross the D24 (be careful!) and follow the D24a across for 350m. Then leave this road to switch to the left. Follow it for 1.5km.

2 - At the junction, continue straight on the old railway track. After the breakthrough in the rock, leave the path to the left and take the small path that leads to a former embankment reclaimed by vegetation. When reaching the Malacercis property, go down the embankment and continue for 1km.

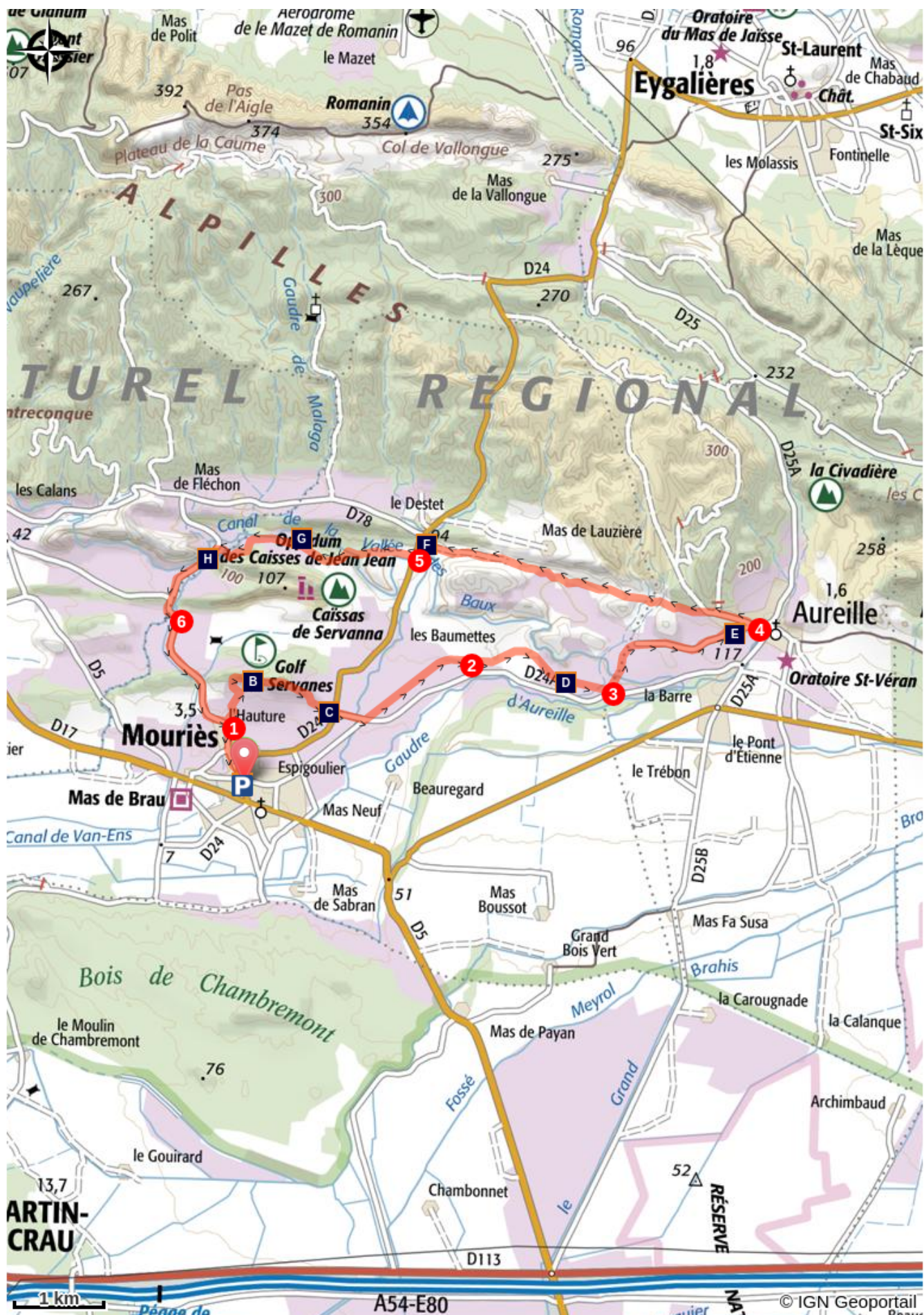
3 - At the crossroads of 4 roads, leave the route of the old railway track and turn left. Cross the Vallée des Baux canal, head north and turn right on the paved road of Pas de Clavel. Continue until the oratory (beautiful view of the village of Aureille).

4 - Turn left at 180° and follow the signs of Eygalières, Mouriès and Maussane (GR® 6). After 600m, leave the GR® 6 going up to the right and continue straight on the GR® 653A. Go along the small massif Pas de Cerf. At the end of the paved road, continue on the path (yellow markings). Leave to the left the oil mill of Vaudoret and take a wide track across. Go along a former motocross circuit and the ruins of an old grist mill. Come out on the D24.

5 - Cross the D24 and continue towards the former sand pit. 800m further, cross the Baux valley canal. Continue to the right and get back on the path by the Gaudre de Malaga, heading towards Mouriès. Cross a large olive grove and a small bridge over the Gaudre. Get back on the Route de Servanes.

6 - Go past the Castle of Servanes to the left and continue on the Route de Servanes until the starting point of the hike in central Mouriès.

On your path...





St. Roch oratory (A)



Former railway Salon-Arles (C)



Oratory of Aureille (E)



The Great-Owl (G)



At the top of the ridges (B)



View of the peaks of the Opies (D)



The old mill GAUDRE of Destet (F)



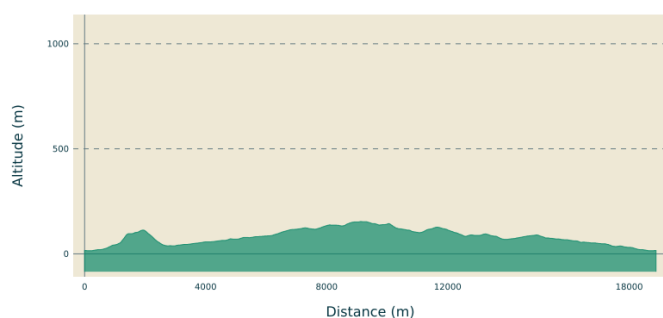
The Baux valley canal (H)

All useful information

Advices

For safety issues and for the preservation of forests, access to natural areas is regulated from June to September. Information during the summer at 08 11 20 13 13 (cost of a local call), on www.bouches-du-rhone.pref.gouv.fr, or the free application MYPROVENCE ENVIE DE BALADE (available on App Store and Android Market).

Altimetric profile



Min elevation 15 m
Max elevation 154 m

Transports

Search for the public transport timetables on the website www.lepilote.com in the municipality of Mouriès.

Access

22km Northwest of Salon-de-Provence, through the D17, D17e then D17.

Advised parking

Parking at the Place de l'Europe, Mouriès

Source

Bouches-du-Rhône Tourisme

Information desks

House of the Alpilles Regional Nature Park



2, boulevard Marceau, 13210 Saint-Rémy-de-Provence

contact@parc-alpilles.fr

Tel : +33 (0)4 90 90 44 00

<http://www.parc-alpilles.fr/>

OTI Alpilles-en-Provence

Place Jean Jaurès, 13210 Saint-Rémy-de-Provence

saintremy@alpillesenprovence.com

Tel : +33 (0)4 90 92 05 22

<http://www.alpillesenprovence.com>

On your path...



St. Roch oratory (A)

Topped on a central pillar in stone, this small chapel was built in 1822, against cholera raging in the region. A niche was built, bullet-shaped, covered by a stone flat roof. A marble plaque was added to the building, where one can read "SAINT ROCH PRIEZ FOR US. 1822-1886".

Attribution : DR



At the top of the ridges (B)

From the Castellans ridgeline to the north, you can see the golf Servanes but above the peaks that house the John John Banks, where there was a Gallic oppidum there two thousand years. To the south lies the village of Mouriès. Finally, to the east, where the ride continues, lies a mosaic of agricultural and viticultural landscape.

Attribution : Marianne Dispa - PNR Alpilles



Former railway Salon-Arles (C)

The construction of the Avignon-Salon railway line was completed in 1868. In 1900, an assessment of traffic showed that the number of travelers and goods (cereals, wine, coal) was small. Although the prosperity of the villages benefited from connection to the railway network, the line was finally closed in 1950, in a favorable context to road traffic.

Attribution : Marianne Dispa - PNR Alpilles



View of the peaks of the Opies (D)

Spectacular observatory, the peaks of the Opies reach 498 m at their highest point, crowned by a square lookout tower. It was built at the beginning of the 20th century, with the help of Marseille firemen, as part of a fire prevention plan.

Attribution : Marianne Dispa - PNR Alpilles



Oratory of Aureille (E)

Since the oratory, a lovely view of the village of Aureille is offers hikers. Dominated by the castle as distinguished atop its rocky outcrop, Aureille is located in the Alpilles massif foot and opens onto the plain of Crau. The village center was once encircled by a wall to protect themselves, hence the shape of terraced houses on each other. Today Aureille is a quiet town and faithful to the traditions of Provence.

Attribution : Marianne Dispa - PNR Alpilles



The old mill GAUDRE of Destet (F)

A former water mill, now in ruins, was working with the waterfall that allowed to turn the wheel and thus to grind grain. The water flowed in a "Witch pot" and follows a cascade of 5 m. The water then goes to another mill, near the arches of the aqueduct of the valley of Les Baux channel.

Attribution : Marianne Dispa - PNR Alpilles



The Great-Owl (G)

Who does not know the Grand Duke of Europe? Europe's largest owl, it nests all year in the cliffs and saw its population increase. Many grand dukes peacefully sleep during the day, waiting for the night to hunt. As the Bonelli's eagle, raptor is a super predator that feeds on small mammals such as hares, hedgehogs, and other birds.

Attribution : DR



The Baux valley canal (H)

This canal, measuring 53km long, was subject to a long process of reflection and design. Designed in 1792, the project will be launched over a century later, in 1914. In a landscape of steppe, it was important to develop human presence and the economy as a hydraulic network irrigates the territory to help the crops survive. This canal supplies all to itself the southern part of the Alpilles.

Attribution : Jason Gaydier - PNR Alpilles



- En aucun cas les auteurs des contenus de ce site ne sauraient être tenus pour responsables de problèmes ou d'accidents sur les itinéraires cités.
- Cependant, nous comptons sur vous pour signaler toutes contradictions importantes entre cette fiche et le terrain.
- Pensez également à signaler les éventuels problèmes rencontrés pendant votre balade sur <http://sentinelles.sportsdenature.fr> (erreur de balisage, panneau défectueux, pollution, conflit d'usages...).
- La vente de cette fiche est autorisée au coût d'impression.
- Ne pas jeter dans la nature.

L'outil Geotrek a été financé par l'Union européenne, le Parc national des Ecrins et le Parc national du Mercantour.

Le projet Chemins des Parcs est financé par la Région Provence-Alpes-Côte-d'Azur et les Parcs naturels régionaux des Alpilles, de Camargue, du Luberon, du Queyras et du Verdon.

Ce projet partenarial rassemble également le Comité Régional du Tourisme, les agences départementales de développement touristique, les offices de tourisme et les syndicats d'initiative.

- The authors of this website will in no case be held responsible for problems or accidents on the routes mentioned.
- We count on you to point out any inconsistency between this content and the field itineraries
- Please report any problems encountered on the routes (route marking problems, defective panels, pollution, conflict of uses ...) on <http://sentinelles.sportsdenature.fr>
- The sale of this sheet is authorized at the cost of printing
- Please don't litter

The Geotrek tool was funded by the European Union, the Ecrins National Park and the Mercantour National Park.

The Chemins des Parcs project is funded by the Provence-Alpes-Côte-d'Azur Region and the regional nature parks of Alpilles, Camargue, Luberon, Queyras and the Verdon.

This project was developed in partnership with the Regional Tourism Committee, the departmental tourist development agencies, and tourist offices.

Avec le soutien de



Avec l'aide technique de :

- Bouches-du-Rhône Tourisme